

11



Maintenance Liquid 11
(ML011-Z-K2/ML011-Z-B2)

For Head Nozzle Surface

- Clean Head nozzle surface

Available ink type:

LH-100 LUS-120 ELH-100 ELS-120

15



Maintenance Liquid 15
(ML015-Z-K2/ML015-Z-B1)

For Daily Maintenance

- Clean Wiper
- Clean Cap
- Clean the area around Heads
- Perform Nozzle Wash (except PR-200 Head)

Available ink type:

LH-100 LUS-120 LUS-350 PR-200
ELH-100 ELS-120 MUH-100-Si

16



Maintenance Liquid 16
(ML016-Z-K2/ML016-Z-B2)

For Nozzle Defect

- Use when the nozzle missing/deflection occurs

USE WITH CAUTION
(Instructions for use on the back)

Available ink type:

LH-100 LUS-120 LUS-350 PR-200
ELH-100 ELS-120

To get Details



How to Choose Maintenance Liquid

MAINTENANCE LIST

Items	When	Note
Before Work		
Test Print	Every day	Check Test Print with Head Gap of 1.5 mm
Shake White Ink Bottle (If white ink is loading)		Take out the ink bottle > Cover with a maintenance cloth firmly and shake it slowly twenty times or more.
During Work		
Head nozzle surface <div>11</div>	Every day (1 to 2 times)	Clean the head nozzle surface with Maintenance Liquid 11.
After Work		
Head nozzle surface <div>11</div>	Every day	Clean the head nozzle surface with Maintenance Liquid 11.
The area around Heads Cap Wiper Wiper tube <div>15</div>		Clean the area around Heads, Cap, Wiper and Wiper tube with Maintenance Liquid 15.
Table		Clean off any ink stains or dirt.
Periodically Care (After Work)		
Glass of LED lamp	Once a week	Clean off any ink stains or dirt with Alcohol
Ink discharge passage <div>15</div>		MAINTENANCE > STATION > DISWAY WASH Fill up the cap with Maintenance liquid 15 > ENTER
Waste ink tank		MAINTENANCE > STATION > WASTE INK TANK *The amount of waste volume is counted, and a warning is displayed when it reaches 80%.
Mist filter	Once a month	CHECK FILTER Clean the filter and filter case. (Or replace the filter)
Antifreeze liquid		Check and refill the antifreeze liquid.
Ink bottle cap	Once a year	Replace SPA-0319/Cap Bv2 Assy (Set of 8)

The most frequent accident



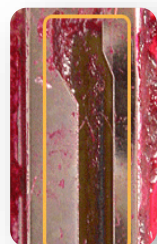
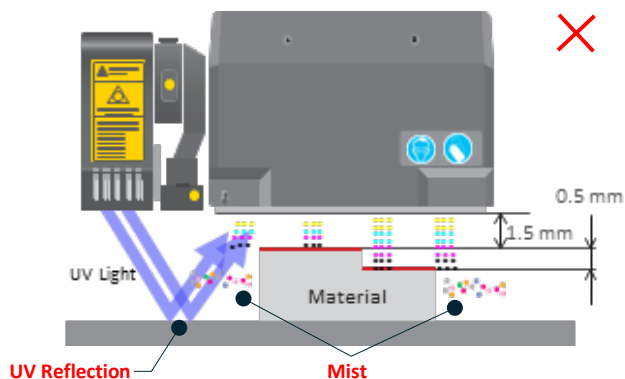
Nozzle missing

Nozzle deflection

Cause

If the gap between the media and the head is 2mm or more, the ink droplets turn into mist before they reach the media.

Also, the reflected UV light from UV LED will increase. That is caused the ink mist to harden due to the reflected UV light*1, and the increased viscosity can cause the ink to land misaligned, missing nozzles, nozzle deflections, and blurry color.



*1 Ink mist to harden on the nozzle surface

To prevent the problems...

STEP 1



Use JIG

STEP 2



Use Head gap within 2.0 mm

STEP 3



Daily Maintenance

Countermeasure

STEP 1 JIG

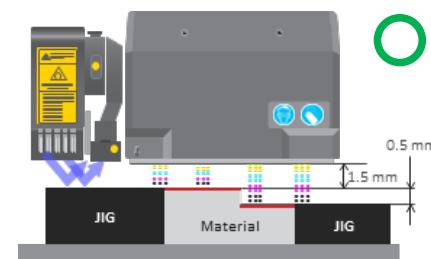
To prevent mist scattering and increased reflected light, please create and use a jig to ensure that there is no height difference between the edge of the print and the table.

STEP 2 HEAD GAP within 2.0 mm

Before printing or change the material, make sure the Media thickness on the machine setting.

STEP 3 DAILY MAINTENANCE

Perform daily maintenance follow per the maintenance list (page 1). Especially, clean the nozzle surface with Maintenance Liquid 11. (LH-100, LUS-120, ELH-100, ELS-120 only)



If nozzle missing / nozzle deflection still occurs

If performing maintenance with Maintenance Liquid 15 does not restore the nozzle, use Maintenance Liquid 16.

* In some cases, nozzle problems caused by factors other than foreign matter on the nozzle surface cannot be resolved. (e.g., Scratches on the nozzle surface, ink hardening on the nozzle surface or inside the head, head damage, etc.)

Warning

- ✓ Maintenance liquid 16 is stronger than other maintenance liquids and melts rubber, plastic, etc. Do not use other than Nozzle Wash.
- ✓ Before performing this maintenance for the first time, be sure to contact our engineers in advance. Also, be sure to read the operation manual before use.

Procedure

Be sure to wear the included safety glasses and gloves.

Items



(SPC-0527)



(ML015-Z-K2)



(Dropper/Maintenance cloth in ML016-Z-K1)



(ML016-Z-K2)

- 1 Normal maintenance using Maintenance Liquid 15
 - Clean wiper, cap, around head
 - Head Cleaning, Nozzle Wash
- 2 Maintenance > STATION > CARRIAGE OUT > Left End
- 3 Fold the included maintenance cloth and drip Maintenance liquid 16 using the included dropper.
 - Amount to drip: 6 cc (approximately 3 times)
- 4 Lightly apply the maintenance cloth (step 3) to the nozzle surface of the head.
 - Estimated time: 2 to 5 minutes
- 5 Once complete, perform head cleaning (hard) immediately.
- 6 Check Test Print
- 7 If the problem is not resolved:
 - Repeat steps 2 to 6 up to three times
 - * Be sure to use a new maintenance cloth each time.

If it doesn't recover, please contact us.



The procedure video